


01 - Introduction

Speaker: John Bennett, MD and Henry Masur, MD



Introduction

Henry Masur, MD
John E. Bennett, MD

7/23/21

Disclosures of Financial Relationships with Relevant Commercial Interests

None

The 2nd Annual Virtual Edition of IDBR
(Year 26 of IDBR)

- **Goal**
 - To provide a course that is as close to the live experience as possible....with the convenience of virtual access
- **All Materials Are Available On Website until December 2022**
 - Syllabus
 - Current lectures will be replaced on e-version with the slides "as presented"
 - (in case there are minor changes or answers included that were absent from syllabus)
 - Corrections, answers to daily questions and other material will be added daily to the website during course and later as appropriate

This Is Board Review

- **This is Board Review**
 - ...not meant to be "What's New"
 - This may not mimic your practice but
 - Hopefully it will mimic exam
 - Faculty provides their "best guess" about the information and type of questions likely to be on the certification, recertification, and check-in exams
- **ABIM Rules**
 - We abide by confidentiality rules of ABIM
 - We will NOT tell you what has been on past exams...even if we know!!!

Components of the Virtual Course

- **Preview Questions** (Faculty Are Live)
- **Lectures** (Recorded within past few weeks)
- **Faculty interaction sessions** (Faculty Are Live)
- **"Lunch" Board Review Sessions** (Faculty Are Live)
- **Scoring for all your ARS responses** (Live Polling/Real Time)
 - Comparison to group metrics

Components of the Virtual Course

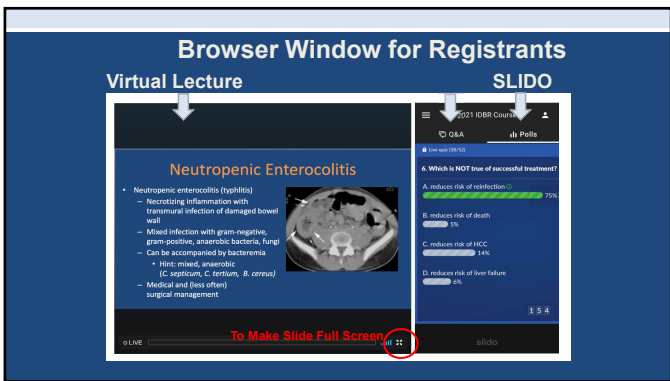
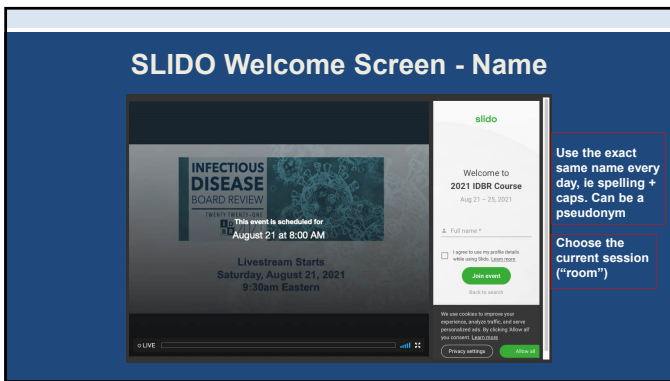
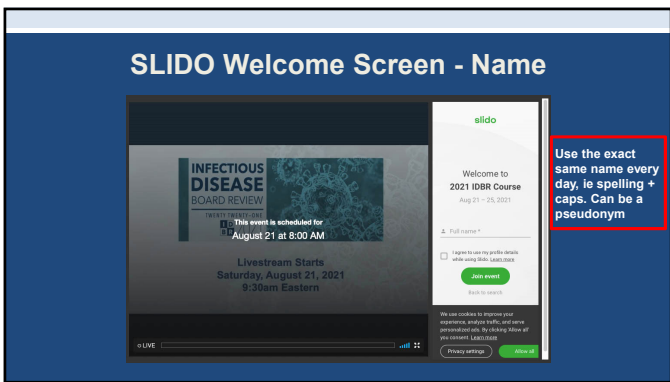
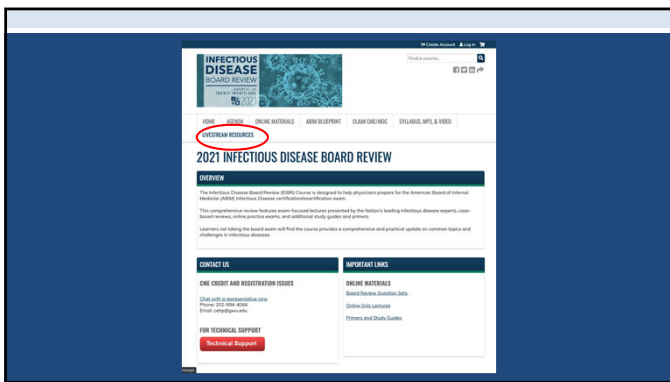
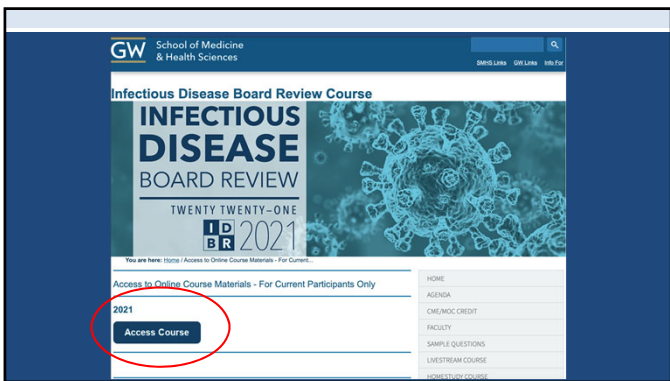
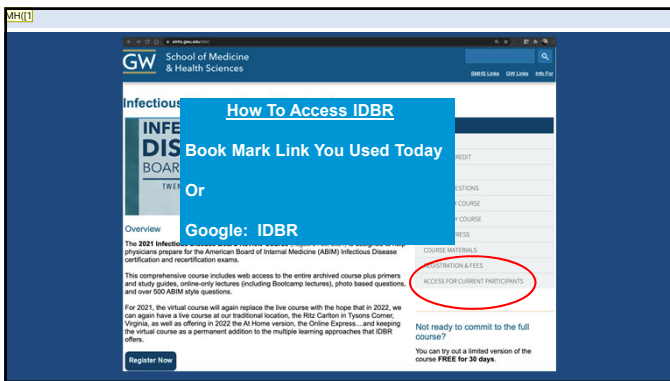
- **Preview Questions** (Faculty Are Live)
- **Lectures** (Recorded within past few weeks)
- **Faculty interaction sessions** (Faculty Are Live)
- **"Lunch" Board Review Sessions** (Faculty Are Live)
- **Scoring for all your ARS responses** (Live Polling/Real Time)
 - Comparison to group metrics

Audience Is Permanently Muted on Course Site

- **Audience: If You Participate in Faculty Chat via Zoom** Only then will you have a "Live Microphone and Camera"

01 - Introduction

Speaker: John Bennett, MD and Henry Masur, MD

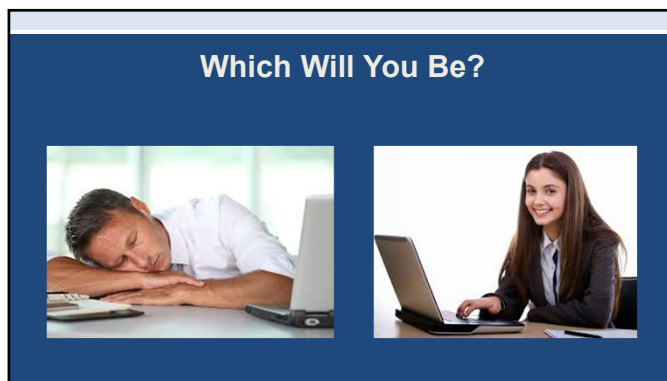
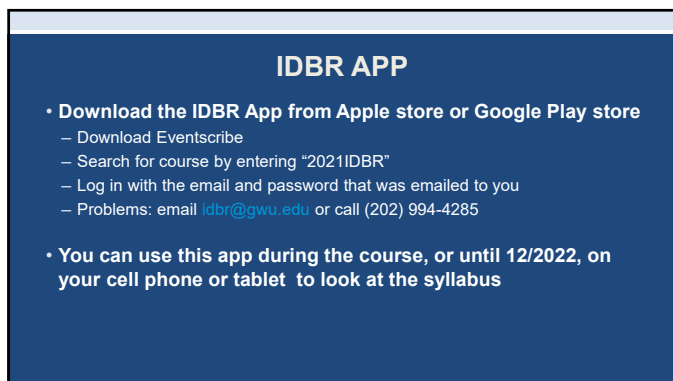
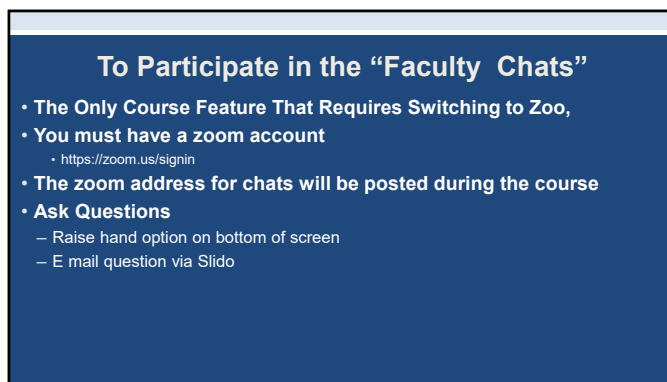
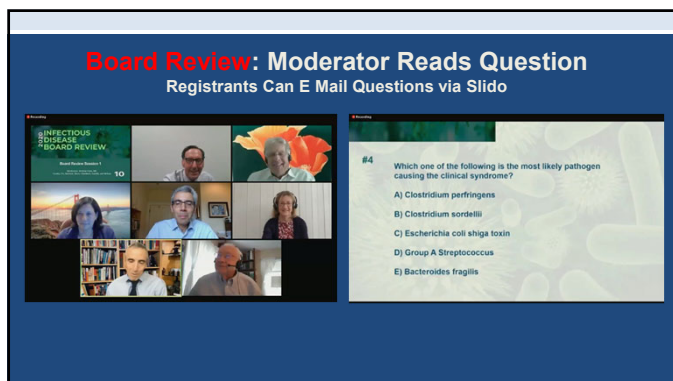


Slide 7

MH[1 Masur, Henry (NIH/CC/CCMD) [E], 8/15/2021

01 - Introduction

Speaker: John Bennett, MD and Henry Masur, MD



01 - Introduction

Speaker: John Bennett, MD and Henry Masur, MD

How To Get The Most Out of Virtual Course

- **This is a Long Course and It's (obviously) Virtual**
 - Decide how you learn best over 10+ hours x 5 days
 - If you don't/can't watch the lectures consecutively...they are all archived
- **Use the ARS System (SLIDO)**
 - To stay awake, be engaged and competitive!
 - Answer the questions and see how you compare to your peers

IDBR Program for Certification/Recertification Preparation

Course Resources for You to Use Before, During, and After Course

- **Virtual course for 5.0 days**
 - Live Board Review Questions During Virtual Course
 - Rationales and daily scores published online by pin # at end of each day
- **Online Board Review Type Questions**
 - 400 Online questions with rationales
- **Online Primers (Tables or Charts or Photos)**
 - Clinical Microbiology
 - Resistance: Antibacterial, Antifungal, Antiviral, HIV
 - Skin Ulcers
 - Rickettsia
 - 115 "Images You Should Know" – rapid pre-exam review
- **Online Recordings of 2021 Lectures (posted within a few days-2 weeks after course)**
 - Listen to audio by MP3 (download and transfer to any device)
 - Watch slides while listening to synchronized audio
- **Nine Online Only Lectures**
 - Talks we wished we had time for during these 5.0 virtual days
 - Equally important as live lectures

Accessing The Course

- **Problems accessing lectures or chat room?**
 - Telephone help line: (202) 994-4285
 - Email help hotline: IDBR@gwu.edu
 - Naomi Loughlin
 - nbl7396@gwu.edu
 - (571) 385-5550 (cell)
 - (202) 994-4509 (office)
- **Faculty welcome your questions**
 - Send email to IDBR@gwu.edu or use SLIDO q and a feature
 - Join zoom "faculty chats" discussion sessions with faculty members each day during breaks

CME and MOC

Total Possible: 114 CME and 114 MOC

- **CME**
 - You must fill out lecture evaluations (via IDBR website)
 - You must request CME (via IDBR website)
 - No pre-test or post-test
 - Total possible hours - 114
 - Lectures - 43
 - Enduring Material 58 (online IDBR website)
- **MOC: one hour CME = 1 MOC credit**
 - You must first obtain CME per above
 - You must give IDBR your ABIM number
 - You must apply via ABIM website so we can link to ABIM
 - You must get 70% on post-test (11/15 correct)
 - (three tries of same test permitted with rationales available after each try)

IDBR Directors and Co-Directors



Richard Whitley
University of Alabama



Andy Pavia
University of Utah



Kieren Marr
Johns Hopkins



Trip Gulick
Weill Cornell



Paul Auwaerter
Johns Hopkins



David Gilbert
University of Oregon



Leticia Hall-Salam
IDBR Program Director

Sheena P. King
CE Coordinator



Naomi Loughlin
IDBR Program Coordinator



Mike D'Anthony
Recording



Mark LaBue
AV Director

Behind Scenes Staff

01 - Introduction

Speaker: John Bennett, MD and Henry Masur, MD

Advice from Jack Bennett MD



Let's Test The ARS (Audience Response System)
Use SLIDO Polling (Right Side of Your Browser)

Why are you taking this course

- 1) Initial ABIM ID Certification
- 2) Recertification
- 3) Update in ID unrelated to ABIM Board Certification

Question 2

Where do you work

- 1) East coast, United States
- 2) Midwest, United States
- 3) South, United States
- 4) West coast, United States
- 5) Europe
- 6) Asia
- 7) Other

Question 3

Which parts of IDBR on line materials have you looked at prior to the course

- 1) Question sets only
- 2) Primers only
- 3) On line lectures only
- 4) Several of the above
- 5) None of the above

Let's Begin!



The End