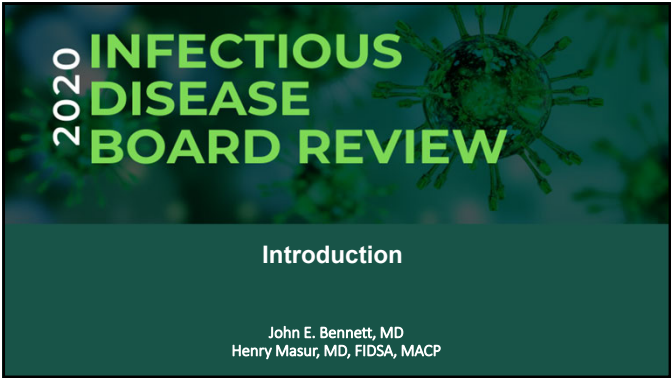


01 – Introduction

Speaker: John Bennett, MD and Henry Masur, MD

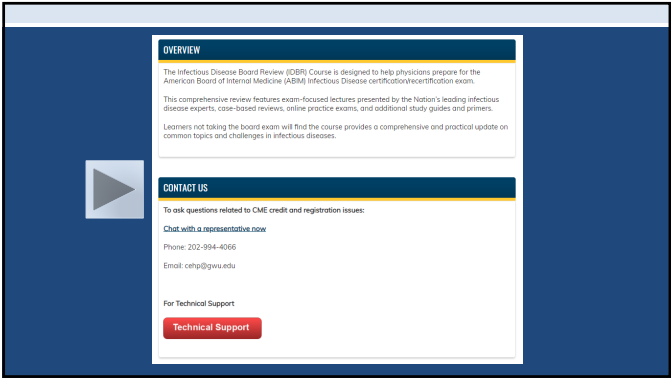


The Inaugural Virtual Edition of IDBR

- **Goal**
 - To provide a course that is as close to the live experience as possible....with the convenience of virtual access
- **All Materials Are Available On Website**
 - Lectures, syllabus, preview questions, “lunch time” board review, answers to board review, and other questions
 - Updated materials will be posted on website
 - Syllabus: current lectures will be replaced on e-version with the slides “as presented” (in case there are minor changes or answers included that were absent from syllabus)

Components of the Virtual Course

- **Preview Questions**
 - Audience will answer “audience response questions” for 30 min to start Saturday-Tuesday mornings (there is no preview Wednesday), questions read by moderator and audience vote by SLIDO
- **Lectures**
 - Registrants are encouraged to answer each faculty question by SLIDO
 - If there is time for questions, faculty will answer as many as possible
- **Faculty interaction sessions**
 - Following each lecture the speaker will be available to answer registrant questions at “lobby session”: see your daily email or contact IDBR
- **“Lunch” Board Review**
 - Faculty will read questions, registrants will vote in SLIDO, faculty will discuss



IDBR APP

- **Download the IDBR App from Apple store or Google Play store**
 - Download Event Scribe
 - Search for course by entering “2020 IDBR”
 - Log in with the email and password that was emailed to you
 - Problems: email idbr@gwu.edu or call 202-994-4066
- **You can use this app during the course, or until 12/2021, on your cell phone or tablet to look at the syllabus**

01 – Introduction

Speaker: John Bennett, MD and Henry Masur, MD

SLIDO

- Log in to Slido.com
 - Use a separate browser window from zoom
 - Have a large zoom window, and a much smaller slido window and keep both open
 - Alternatively, download the slido app from the apple store onto your cell phone
 - Create a temporary username in the upper right corner
- Enter Slido Code we provide at the meeting
- On the blue bar at the top of the screen, click “polling”
- When the first polling question is presented, you should see the opportunity to vote, and after voting the audience cumulative results will appear on your slido window

This Is Board Review

- This is Board Review
 - ...not meant to be “What’s New”
 - This may not mimic your practice but
 - Hopefully it will mimic exam
 - Faculty provides their “*best guess*” about the information and type of questions likely to be on the certification, recertification, and check-in exams
- ABIM Rules
 - We abide by confidentiality rules of ABIM
 - We will tell you what is plausible/appropriate for the exams
 - We will NOT tell you what has been on past exams...even if we know!!!

Infectious Disease Board Review Blue Print (Certification = MOC) Accessed 7/20

Medical Content Category	% of Exam (Cert and MOC)
Bacterial Diseases	27%
Human Immunodeficiency Virus (HIV) Infection	15%
Antimicrobial Therapy	9%
Viral Diseases	7%
Travel and Tropical Medicine	5%
Fungi	5%
Immunocompromised Host (Non-HIV Infection)	5%
Vaccinations	4%
Infection Prevention and Control	5%
General Internal Medicine, Critical Care and Surgery	18%

<http://www.abim.org/-/media/ABIM%20PublicFiles/pdf/exam-blueprints/certification/infectious-disease.pdf>

<http://www.abim.org/-/media/ABIM%20PublicFiles/pdf/exam-blueprints/maintenance-of-certification/infectious-disease.pdf>

How Questions Are Chosen by ABIM

4 sets of 60 questions for Cert, Recert
2 sets of 45 for Check-In

“At least 70% of exam questions will address high-importance content”

“No more than 30% of exam questions will address medium-importance”

“No exam questions will address low-importance content”

“Independent of the importance and task ratings
- No more than 15% of exam questions will address low-frequency content”

Multiple editions, or “forms,” of the exam are used, and they may differ in question order and content
Certification exams are entirely closed book

Recertification and Knowledge Check-in permit Up to Date access

Which Will You Be?



How To Get The Most Out of Virtual Course

- This is a Long Course and It’s (obviously) Virtual
 - Decide how you learn best over 10+ hours x 4.5 days
 - If you don’t/can’t watch the lectures consecutively...they are all archived
- Use the ARS System (SLIDO)
 - To stay awake, be engaged and competitive!
 - Answer the questions and see how you compare to your peers

01 – Introduction

Speaker: John Bennett, MD and Henry Masur, MD

Course Resources for You to Use Before, During, and After Course

- **Virtual course for 4.5 days**
 - Live Board Review Questions During Virtual Course
 - Rationales and daily scores published online by pin # at end of each day
- **Online Board Review Type Questions**
 - 400 Online questions with rationales
- **Online Primers (Tables or Charts or Photos)**
 - Clinical Microbiology
 - Resistance: Antibacterial, Antifungal, Antiviral, HIV
 - Skin Ulcers
 - Rickettsia
 - 115 “Images You Should Know” – rapid pre-exam review
- **Online Recordings of 2020 Lectures (posted within a few days-2 weeks after course)**
 - Listen to audio by MP3 (download and transfer to any device)
 - Watch slides while listening to synchronized audio
- **Online Only Lectures**
 - Talks we wished we had time for during these 4.5 days
 - Equally important as live lectures

Accessing The Course

- **Problems access lectures or chat room**
 - Telephone help line: 202-694-4235
 - Email help hotline: idbr@gwu.edu
- **Faculty welcome your questions**
 - Send email to idbr@gwu.edu
 - Join zoom “lobby chat” with faculty member immediately following his/her lecture: see daily email from IDBR for zoom access

CME and MOC Total Possible: 101 CME and 101 MOC

- **CME**
 - You must fill out lecture evaluations (via IDBR website)
 - You must request CME (via IDBR website)
 - No pre-test or post-test
 - Total possible hours - 101
 - Lectures – 43
 - Enduring Material 58 (online IDBR website)
- **MOC: one hour CME = 1 MOC credit**
 - You must obtain CME per above
 - You must give IDBR your ABIM number
 - You must apply via ABIM website so we can link to ABIM
 - You must get 70% on post-test
 - (three tries of same test permitted with rationales available after each try)

IDBR Directors and Co-Directors



Richard Whitley
University of Alabama



Andy Pavia
University of Utah



Trip Gulick
Weill Cornell



Paul Auwaerter
Johns Hopkins



David Gilbert
University of Oregon

Behind Scenes Staff



Leticia Hall-Salam
IDBR Program Director



Sheena P. King
CE Coordinator



Naomi Loughlin
IDBR Program Coordinator



Mike D'Anthony
Recording



Mark LaBue
AV Director



Austin McLoughlin
ARS Director

Advice from Jack Bennett MD



01 – Introduction

Speaker: John Bennett, MD and Henry Masur, MD

Let's Begin!

